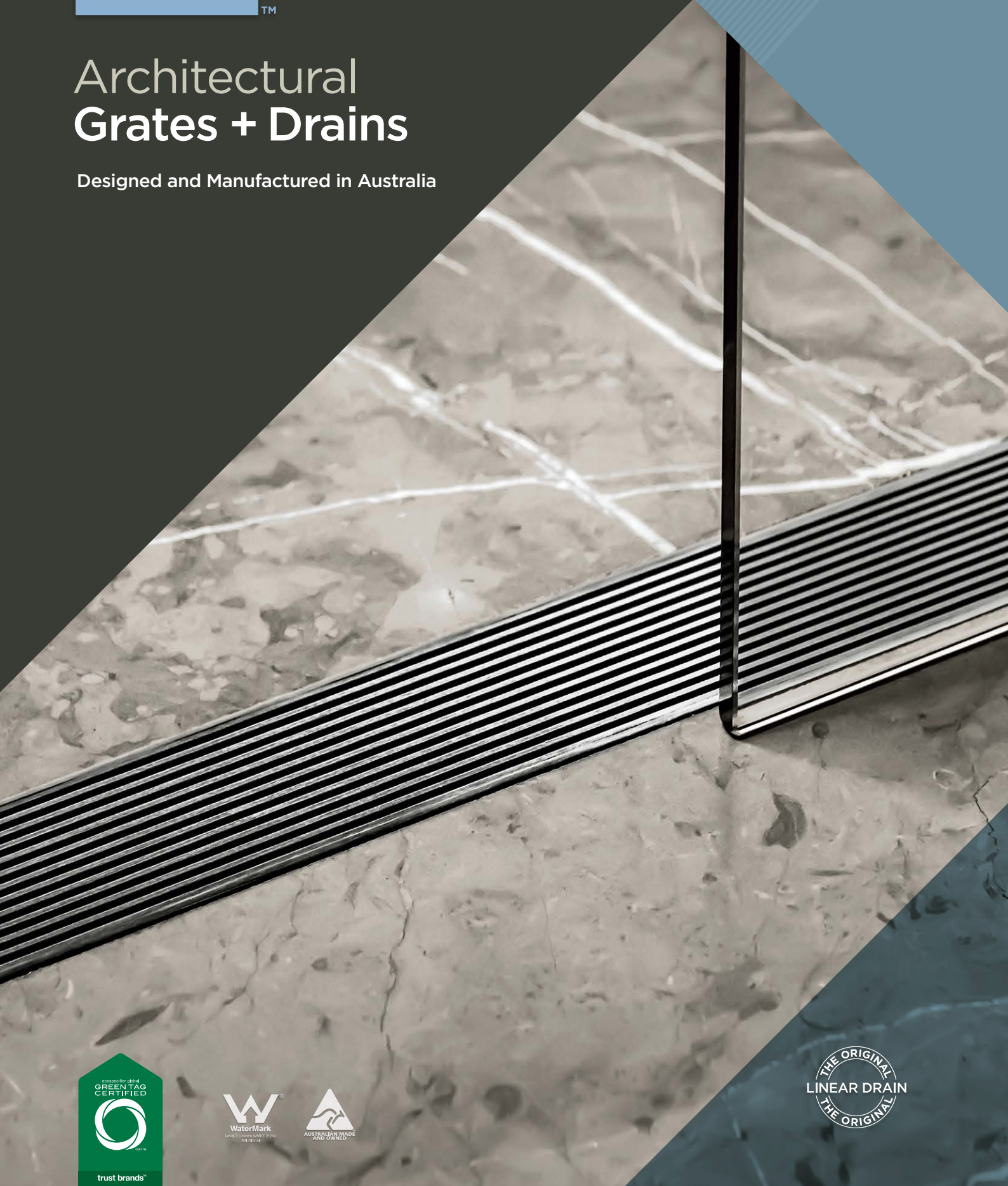




# Architectural Grates + Drains

Designed and Manufactured in Australia





## Innovating Drainage › SINCE 1989

**Founded in 1989, Stormtech invented the original Slot Drain for outdoors, Linear Drainage for showers and bathrooms, and level Threshold Drainage.**

30<sup>+</sup>  
YEARS



Stormtech's Slimline Grates and Drains are available in a range of sizes and depths to suit both residential and commercial applications. The Slimline system delivers durability, design versatility and architectural style, creating seamless solutions for any project.

Stormtech proudly builds on its unrivalled environmental reputation as the only drainage manufacturer with Level-A GreenTag Certification across our complete range of products.

Beautifully crafted from marine grade stainless steel and manufactured in Australia, Stormtech systems ensure timely supply and the highest standards in workmanship and quality.





# Commercial Hospitality Residential Health + Aged Care



### COMMERCIAL + HOSPITALITY

Sporting Facilities

Universal Access

Thresholds

Pedestrian Areas

Water Fountains

Bars + Restaurants

Hotels + Resorts

Commercial Kitchens

Swimming Pools

Entry Mats

### RESIDENTIAL, HEALTH + AGED CARE

Bathrooms + Showers

Pools + Surrounds

Courtyards + Outdoors

Laundries

Thresholds

Driveways

Paved Areas





## Linear Drainage



**Available with a variety of Grates and Tile Inserts  
Suitable for sanitary and stormwater applications**

### **MADE TO LENGTH DRAINAGE UNITS**

The Stormtech Made-to-Length products are a complete finished stainless steel drainage unit ready for installation with custom waste outlet position. No assembly required.

Available with custom floor and/or wall flanges to suit tile depth.

### **FIXED LENGTH DRAINAGE UNITS**

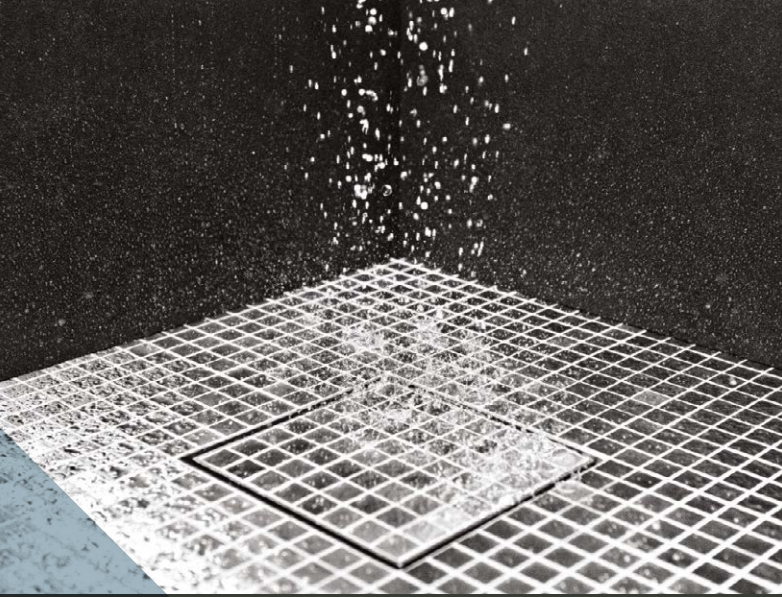
Stormtech complete finished units with centre waste outlet are available in 900mm, 1000mm, 1200mm and 1500mm lengths.

### **MODULAR KITS**

Modular site finished system designed for flexibility and ease of installation.

Available in lengths starting at 900mm. Joiners and angle joiners available for unrestricted lengths and corner installations

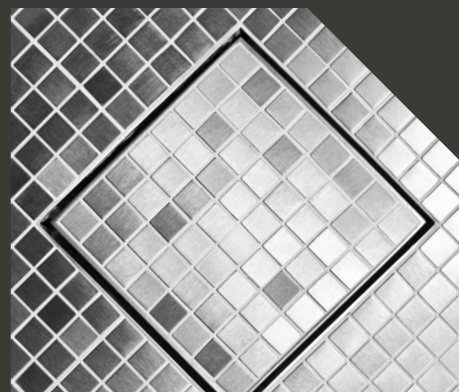




## SQUARE FLOOR WASTES

The Stormtech Square Range offers a luxurious finish and great value wherever a traditional floor waste is required.

Available in all grate styles and finishes to compliment your Stormtech linear drainage.







# Specialised Linear Drainage



## THRESHOLD DRAINAGE

Stormtech pioneered the design of the level threshold drainage system. From its origin in Universal Access, to its emergence as a popular design choice, Stormtech remains at the forefront of threshold drainage innovations and contemporary design.

Access and Mobility Code compliant, the threshold range creates a zero threshold, for seamless continuity between indoor and outdoor areas, Suitable for sliding, hinged, bi-fold and top hung doors.



## VINYL CLAMP

Designed specifically for vinyl floor environments, the Stormtech Vinyl Clamp range provides a screw down flange that mechanically clamps the vinyl beneath, offering seamless integration into vinyl floor surfaces.

Ideally suited to wet areas in health and aged care facilities, and commercial kitchens environments.





# High Performance Outdoor



## SPECIAL ASSEMBLY

Narrow profile, high capacity drainage systems allowing flexibility in pool design and ideally suited to wet-edge and infinity pool applications.

## SLOT DRAIN

Designed for stormwater run-off and surface water drainage around driveways, paved areas, sporting areas and garden edges.







## Custom Fabrication



### BUILT FOR YOU

Our Custom Fabrication range creates a tailored, site specific solution for unique situations.

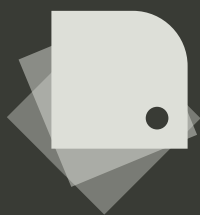
Customise and configure dimensions, capacity requirements and grate finish to precisely suit your project design.

All custom drainage system are available in load classes from light (LOAD CLASS A) to extra heavy duty (LOAD CLASS D).





## Variations + Finishes



### DESIGNER SELECTIONS

Create perfect harmony in the bathroom with our range of luminous metallic grate finishes or complement a contemporary design with our deep black finishes in satin or matte.

*Marie Newson.*





# Stormtech

## › Product Selector

38mm  
Grate

65mm  
Grate

100mm  
Grate +

### Linear Drainage Stormwater / Sanitary Applications



**AR**

Architectural

DIMENSIONS - WIDTH x DEPTH -	MADE TO LENGTH - CUSTOM OUTLET - All Stainless Steel	FIXED-LENGTH - CENTRE OUTLET - All Stainless Steel	MODULAR KITS	
			Stainless Steel Channel	uPVC Channel
106mm x 23mm	100ARi20MTL	100ARiCO20	100ARi20	100ARG20
106mm x 32mm	-	-	-	100ARG30
106mm x 42mm	100ARi40MTL	-	-	-
74mm x 27mm	65ARi25MTL	65ARiCO25	65ARi25	65ARG25
74mm x 42mm	65ARi40MTL	-	65ARi40	65ARG40
46mm x 42mm	38ARi40MTL	-	-	38ARG40



**TR**

Standard Range

106mm x 23mm	100TRi20MTL	100TRiCO20	100TRi20	100TRG20
106mm x 42mm	100TRi40MTL	-	-	-
74mm x 27mm	65TRi25MTL	65TRiCO25	65TRi25	65TRG25
74mm x 42mm	65TRi40MTL	-	65TRi40	65TRG40



**Ti**

Tile Insert

106mm x 23mm	100Ti20MTL	100TiCO20	100Ti20	100TiG20
106mm x 31mm	100Ti30MTL	100TiCO30	-	-
106mm x 42mm	100Ti40MTL	-	-	-
74mm x 27mm	65Ti25MTL	65TiCO25	65Ti25	65TiG25
74mm x 31mm	65Ti30MTL	65TiCO30	-	-
74mm x 42mm	65Ti40MTL	-	65Ti40	-



**MND**

Marc Newson

106mm x 23mm	100MNDi20MTL	100MNDiCO20	100MNDi20	100MNDG20
74mm x 27mm	65MNDi25MTL	65MNDiCO25	65MNDi25	65MNDG25



**PS**

Punched Slot

106mm x 23mm	100PSi20MTL	100PSiCO20	100PSi20	100PSG20
106mm x 42mm	100PSi40MTL	-	-	-
74mm x 27mm	65PSi25MTL	65PSiCO25	65PSi25	65PSG25
74mm x 42mm	65PSi40MTL	-	65PSi40	65PSG40
46mm x 42mm	38PSi40MTL	-	-	38PSG40



**FT**

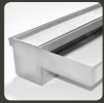
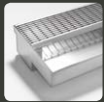
Flat Top

106mm x 23mm	100FTi20MTL	-	-	-
74mm x 27mm	65FTi25MTL	-	-	-

### Linear Drainage + Integrated Flange

GRATE STYLE	DEPTH	100mm Grate Width	65mm Grate Width
<b>AR</b> › Premium Architectural	42mm	100ARiMTLF	65ARiMTLF
<b>TR</b> › Standard Range		100TRiMTLF	65TRiMTLF
<b>Ti</b> › Tile Insert		100TiMTLF	65TiMTLF
<b>PS</b> › Punched Slot		100PSiMTLF	65PSiMTLF





## Threshold Drainage

GRATE STYLE - IMAGE OPPOSITE -	DIMENSIONS - GRATE WIDTH -	SLIDING + HINGED DOORS		BI-FOLD + TOP HUNG DOORS
		Door Track with Sub-sill Tray	Door Track Only Application	
AR › Premium	100mm	100ARTDi	100ARTDiS	100ARTDiBF ^
	65mm	65ARTDi	65ARTDiS	-
TR › Standard Range	100mm	100TRTDi	100TRTDiS †	100TRTDiBF
	65mm	65TRTDi	65TRTDiS	-
Ti › Tile Insert	100mm	100TiTDi	100TiTDiS #	100TiTDiBF
	65mm	65TiTDi	65TiTDiS	-
MND › Marc Newson	100mm	100MNDDi ††	100MNDDiS	100MNDDiBF
	65mm	65MNDDi	65MNDDiS	-
PS › Punched Slot	100mm	100PSTDi	100PSTDiS	100PSTDiBF ##
	65mm	65PSTDi	65PSTDiS	-

## Square Floor Waste

GRATE STYLE - IMAGE OPPOSITE -	DIMENSIONS			SQ PRODUCT CODE
	- WIDTH x LENGTH -	- DEPTH -	- OUTLET SIZE -	
AR › Premium	103mm x 103mm	22mm	DN80	SQ100AR
	103mm x 103mm	22mm	DN50	SQ100AR-44
	103mm x 103mm	22mm	DN40	SQ100AR-38
TR › Standard Range	103mm x 103mm	22mm	DN80	SQ100TR
	103mm x 103mm	22mm	DN50	SQ100TR-44
	103mm x 103mm	22mm	DN40	SQ100TR-38
MND › Marc Newson	103mm x 103mm	22mm	DN80	SQ100MND
	103mm x 103mm	22mm	DN50	SQ100MND-44
	103mm x 103mm	22mm	DN40	SQ100MND-38
PS › Punched Slot	103mm x 103mm	22mm	DN80	SQ100PS
	103mm x 103mm	22mm	DN50	SQ100PS-44
	103mm x 103mm	22mm	DN40	SQ100PS-38
Ti › Tile Insert	130mm x 130mm	23mm	DN100	SQ100Ti20
	130mm x 130mm	30mm	DN80	SQ100Ti30
	130mm x 130mm	30mm	DN50	SQ100Ti30-44
	130mm x 130mm	30mm	DN40	SQ100Ti30-38
CR › Commercial	150mm x 150mm	32mm	DN100	SQ150CR
	150mm x 150mm	32mm	DN80	SQ150CR-76
	200mm x 200mm	32mm	DN100	SQ200CR
	200mm x 200mm	32mm	DN80	SQ200CR-76

## Landscape + Pool Drainage

DESCRIPTION	DIMENSIONS		PRODUCT
	- TOP CHANNEL -	- LENGTH -	
Special Assembly › 100mm Pipe with Channel	74mm x 42mm	3000mm	65G100
Special Assembly › 90mm Pipe with Channel	74mm x 42mm	3000mm	65G90
Special Assembly › 100mm Pipe with Channel	46mm x 42mm	3000mm	38G100
Special Assembly › 90mm Pipe with Channel	46mm x 42mm	3000mm	38G90

Complete the Special Assembly Series with an AR, TR or PS Stormtech grate design.

Slot Drain › 90mm Pipe with 25mm PVC Insert Only. <b>NO HOLES</b>	-	3000mm	SD90
Slot Drain › 90mm Pipe with 25mm PVC Insert. <b>WITH HOLES</b>	-	3000mm	SD90H

The Slot Drain PVC Insert can be substituted with Stainless Steel on request (AR grate design only)

## Vinyl Clamp Drainage

Vinyl Clamp Drainage Unit	170mm x 27mm (WIDTH x DEPTH)	VC100-25
	170mm x 42mm (WIDTH x DEPTH)	VC100-42





Visit [stormtech.com.au](http://stormtech.com.au)

#### PRODUCT DETAILS

For full product details, including assembly and installation information, visit our website.

#### TECHNICAL DRAWINGS

To assist planning your project we provide complete CAD files for download from our website.

#### DISTRIBUTORS

To find a distributor near you, please visit our website or call our office.



**Stormtech™**

Phone 1300 653 403

Email [info@stormtech.com.au](mailto:info@stormtech.com.au)